

## SURFACE TEST STATIONS

# 1.9.5



### Flush Fink<sup>®</sup> Cathodic Protection Test Stations

The Flush Fink<sup>®</sup> cathodic protection test station and terminal enclosure is a high strength, maintenance free, non-conductive, flush mounted below ground terminal. It's patented "Bell Jar" design keeps test leads dry even when the enclosure is covered by flood water. Field proven since 1978, Flush Fink<sup>®</sup> is manufactured by Cott Manufacturing Co.



### Features

#### CP Test Station

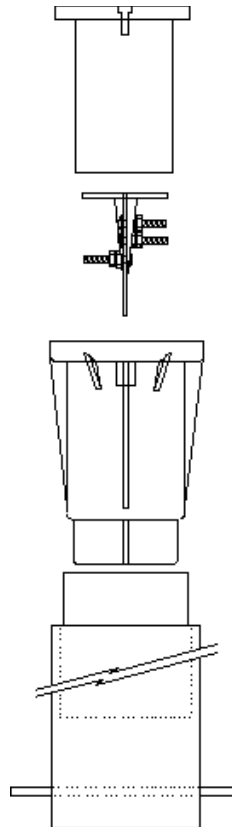
Watertight Bell, Terminal Board and Housing are made from Makroblend<sup>®</sup> polycarbonate alloy, one of the worlds toughest plastics. Flush Fink<sup>®</sup> is impervious to impact, traffic loads and chemical spills common to street usage.

#### Support Post

CottPipe<sup>®</sup> PE (standard) polyethylene blend has over 20 years of proven durability. CottPipe<sup>®</sup> PC (optional) polycarbonate is available for the toughest applications. Standard length 1 foot - available to 40 feet with Cott's Telescoping Extender.

#### Colors

Red, Orange, Yellow, Green, Blue, White, and Black are standard on Flush Fink<sup>®</sup> and CottPipe<sup>®</sup>. Any color is available as an option.



#### Hardware

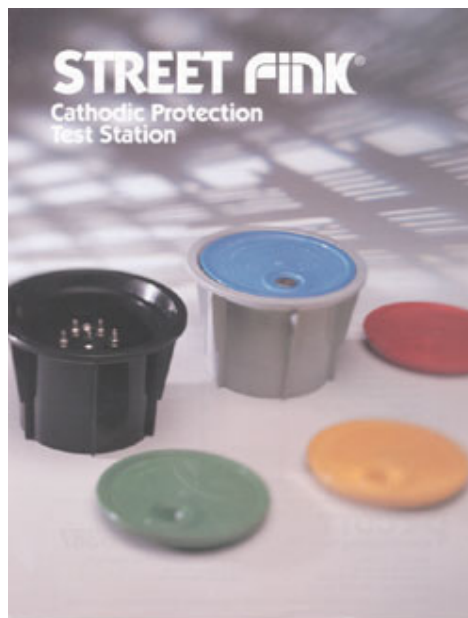
Standard nickel plated brass or optional stainless steel for guaranteed long service life. Up to 11 terminals accessible from both sides of the board. **Accessories** All Flush Fink<sup>®</sup> terminal boards can accommodate CottShunts<sup>®</sup> Slide Resistors, Rheostats, CottMeters<sup>®</sup> (Volt or Amp), Burndy connectors, Cott bonding/shorting straps, Banana Jacks, and lightning arrestors.

#### Dimensions

5-1/2" Diameter x 8" height fits 4" schedule 40 pipe.

**Surface Test Stations Continued.....****1.9.5****Street Fink® Cathodic Protection Test Stations**

The Street Fink® cathodic protection test station is a non-conductive, high capacity, flush mounted, below ground terminal that is used to conveniently monitor electrical currents and potentials associated with all types of underground piping, cables, and other metallic structures. Designed especially for use in troublesome locations where water, street traffic and other adverse conditions exist, the Street Fink® will maintain its structural integrity during hard usage and is suitable for installation in asphalt. Made by Cott Manufacturing Company.

**Features****CP Test Station**

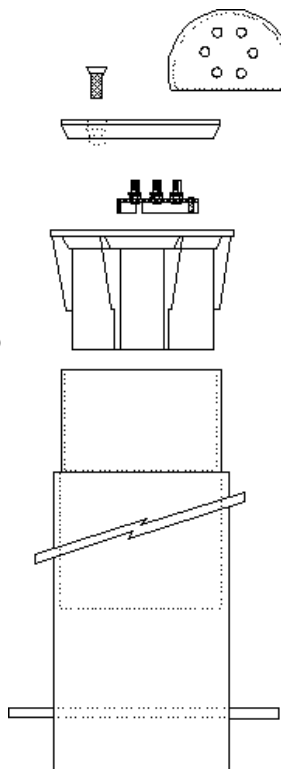
Lid, Terminal Board and Housing made from Makroblend® polycarbonate. One of the toughest plastics in the world. Not damaged by chemicals common to street usage.

**Support Post**

CottPipe® PE (standard) polyethylene blend has over 20 years of proven durability. CottPipe® PC (optional) polycarbonate is available for the toughest applications. Standard length 1 foot - available to 40 feet with Cott's Telescoping Extender.

**Colors**

Red, Orange, Yellow, Green, Blue, White, and Black are standard on Street Fink® and CottPipe®. Any color is available as an option.

**Hardware**

Standard nickel plated brass or optional stainless steel for guaranteed long service life. Up to 9 terminals accessible from both sides of the board.

**Accessories**

All Street Fink® terminal boards can accommodate CottShunts® Slide Resistors, Rheostats, CottMeter® (Volt or Amp), Burndy connectors, Cott bonding/shorting straps, Banana Jacks, locking devices and lightning arrestors.

**Dimensions**

7-3/4" Diameter x 5" height fits 6" schedule 40 pipe.