

ISOZIN "Z" WRAP - Machines

4.2.2

- ✧ "Z" WRAP-A-PIPE
- ✧ "Z" WRAP-A-PLATE
- ✧ "Z" WRAP-A-EDGE

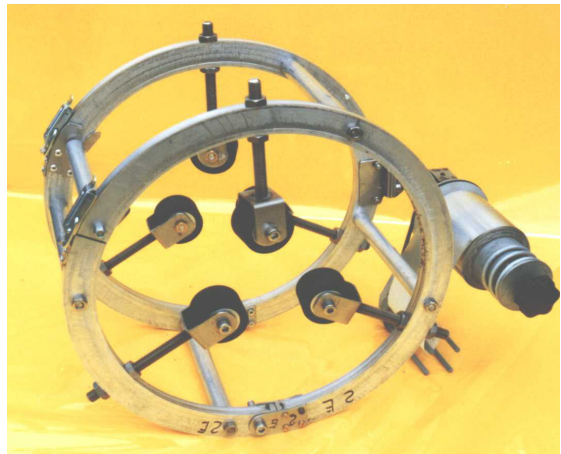
ISOZIN Zinc Tape "Z" WRAP machines applicators have been designed and developed to ensure that ISOZIN Zinc Tape is applied correctly to most types of structures and in most types of site conditions.

The design range of the **ISOZIN Zinc Tape "Z" WRAP** machines are a culmination of extensive site experience that technicians have gained in all types of environments.

All **ISOZIN Zinc Tape "Z" WRAP** machines are manufactured from a strong, lightweight aluminium alloy and larger machines can be easily dismantled for transportation. Compression rollers and tape dispensers are fully adjustable for precision fitting and application.

ISOZIN "Z" WRAP BENEFITS :

- Versatile applications
- Easy to operate
- Fast application
- Consistent, High quality
- Lightweight and portable
- Very robust

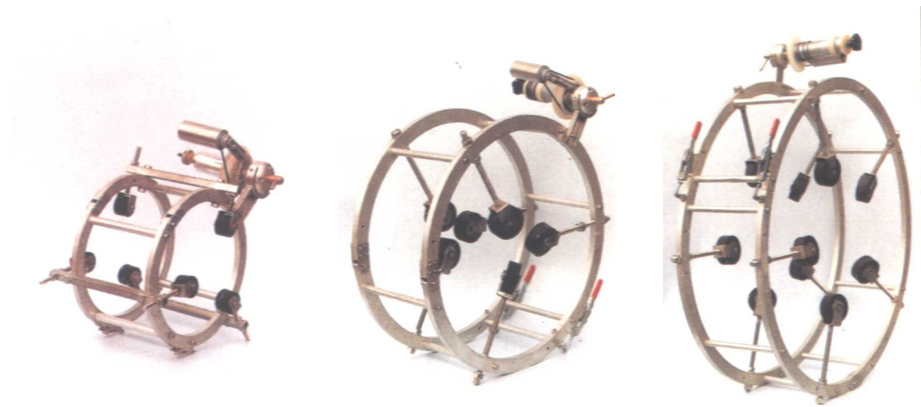


★ "Z" WRAP-A-PIPE

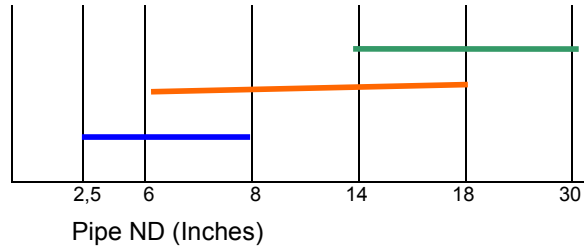
4.2.2

The **ISOZIN "Z" WRAP-A-PIPE** machine is available in 3 standard size ranges covering cylinder nominal diameters from 2.5" to 30".

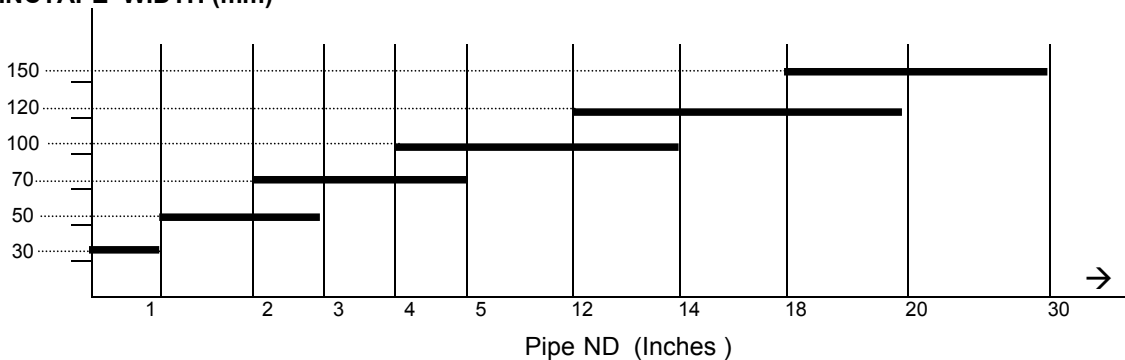
Characteristics	"Z" WRAP-A-PIPE 1	"Z" WRAP-A-PIPE 2	"Z" WRAP-A-PIPE 3
Weight (Kg)	5	13.5	19.0
Overall Diameter (mm)	650	1080	1400



"Z" WRAP-A-PIPE 3
 "Z" WRAP-A-PIPE 2
 "Z" WRAP-A-PIPE 1



ZINCTAPE WIDTH (mm)

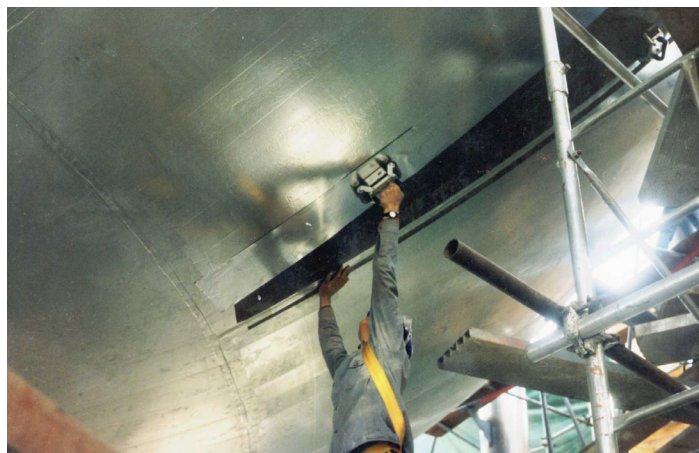
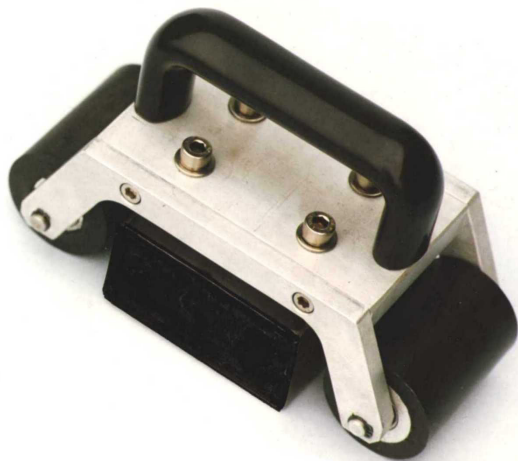


Recommended tape overlap : 10mm

Special **"Z" WRAP-A-PIPE** machines can be made to order to suit any particular diameter requirements

4.2.2**⊛ "Z" WRAP-A-PLATE**

The **"Z" WRAP-A-PLATE** machine has been specifically designed for application of Zinc tape onto flat surfaces and large curved structures, such as spherical storage tanks etc. The **"Z" WRAP-A-PLATE** incorporates a powerful permanent magnet that can be adjusted so as to vary the roller pressure onto the tape.



4.2.2**⊗ "Z" WRAP-A-Edge**

The **"Z" WRAP-A-Edge** machine is widely used in the transport industry for application of Zinc Tape onto the rims of window frames and other critical profiles where repairs would be difficult and expensive.

The machine is extremely easy to use ensuring fast application and effective bonding of the Zinc Tape.

