

## Technical Datasheet

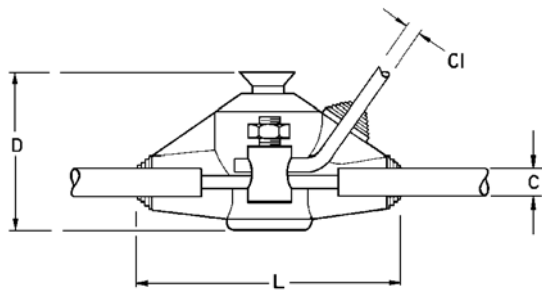
### ELECTRICAL ACCESSORIES

#### SPLICE KITS

All types of splice kit contain:

- Casting mould made from impact resistant polycarbonate
- Hydrolysis resistant polyurethanic resin and hardener
- Funnel cap
- Sealing tape

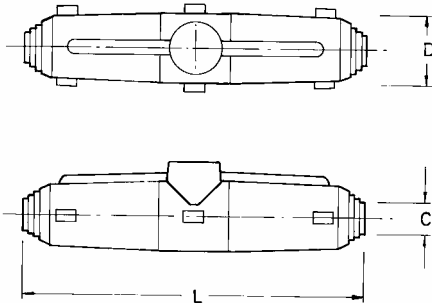
#### YCP TYPE



Type	L (mm)	D (mm)
YCP	130	73

C (mm)		C <sup>1</sup> (mm)	
Min	Max	Min	Max
11	25	7	21

#### STRAIGHT THROUGH TYPE



Type	Dimension			
	L (mm)	D (mm)	C (mm)	
			Min	Max
M11	190	36	7	22
M12	260	47	14	30
M13	360	55	20	37

#### Resin Properties

Standard resin is suitable for low voltage cathodic protection cables up to 1 kV and is a halogen free polyurethanic cast resin.

There are no toxic emissions during the mixing and casting and there is no cause of irritation to the skin or allergies

Property	Value
Processing time 100 ml @ 5, 23 and 35 °C	35, 20 and 15 minutes
Gel time (<1000 ml @ 23 °C)	17 minutes
Open cup flash point	>200 °C
Total volume contraction during hardening	6.5 % (maximum)
Impact strength	>10 kJ/m <sup>2</sup>
Hardness	54 Shore D
Storage temperature	+15 to +35 °C
Storage conditions	40 months in bag provided
Standards / tests	DIN VDE 0291, Part 2



CORROSION CONTROL

## Technical Datasheet

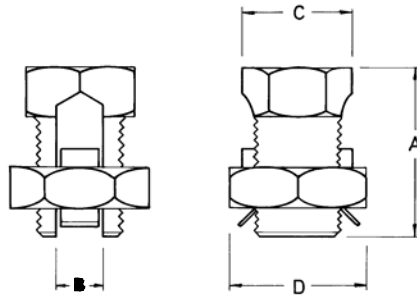
### CABLE LUGS AND BUTT SPLICES

Heavy duty lugs and butt splices for terminating cables in the 6mm<sup>2</sup> to 70mm<sup>2</sup> size range. The terminals are available with different bolt hole diameters. Both terminals and butt splices are manufactured from tinned copper tube with a flared cable entry to ease termination.



### LINE TAPS

Manufactured from brass to BS 2874 - CZ121 tinned overall.



Type	Conductor Equal Diameter (mm)		Dimensions (mm)			Weight (kg/100)	To suit conductors with nominal cross sectional area of:
	Min	Max	A	C	D		
HD10	3.80	5.5	24	13.34	18.00	2.75	10.00 - 16.00 mm <sup>2</sup>
HD12A	5.30	8.00	31	18.00	23.30	5.50	25.00 - 35 mm <sup>2</sup>
HD14	7.30	11.00	41	23.30	30.50	11.60	50.00 mm <sup>2</sup>
HD15	8.80	14.00	47	30.50	37.40	21.50	70.00 - 90.00 mm <sup>2</sup>

### CABLE WARNING TAPE

Cable warning tape should be laid in the trench, typically 150 mm above the cable. BAC warning tape is available in English and English / Arabic.



Text	Text and Colour	Width	Length (per roll)
English	<b>CAUTION CAUTION CAUTION ELECTRIC CABLE BELOW</b>	150 mm	365 m
English / Arabic	<b>احذروا الموت كهرباء CAUTION-ELECTRIC CABLE BELOW</b>	150 mm	365 m