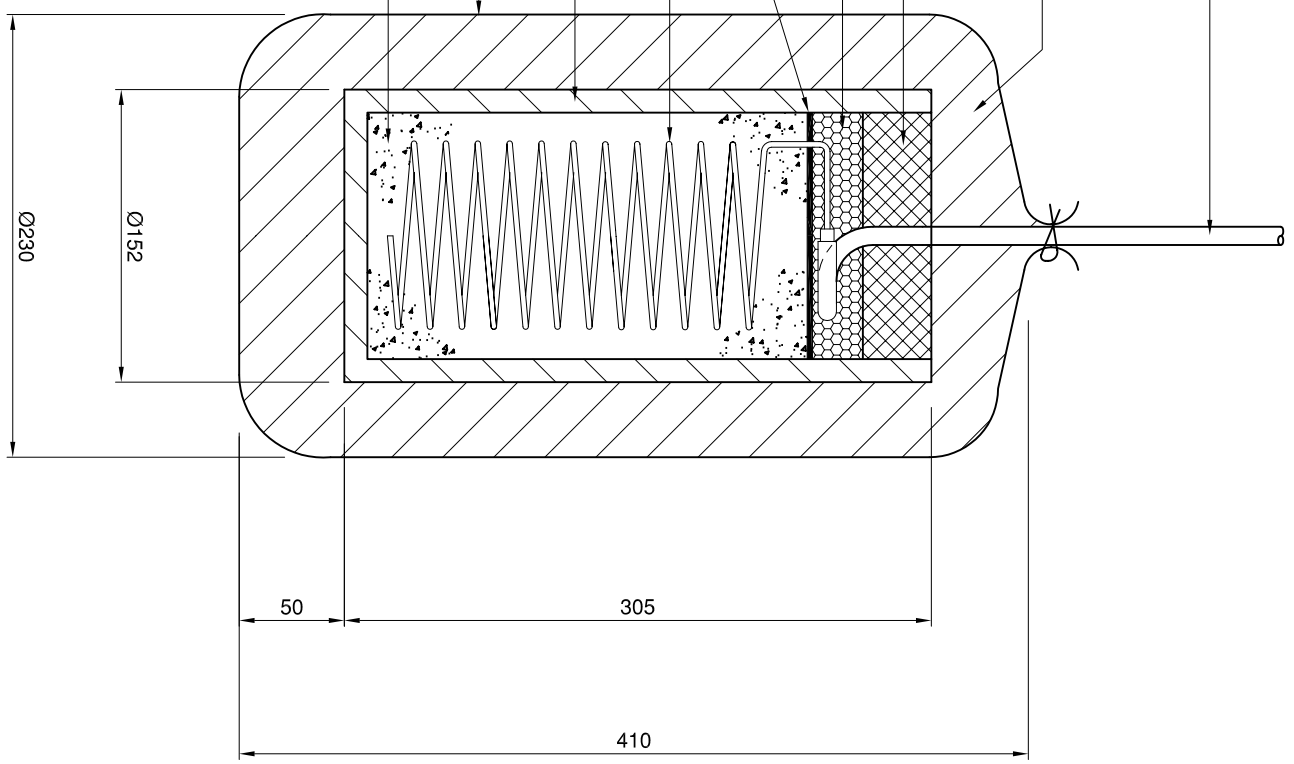


DO NOT SCALE

CABLE :
TO CUSTOMER
REQUIREMENTS

BACKFILL
75% POWDERED GYPSUM
20% GRANULAR BENTONITE
5% SODIUM SULPHATE

CONCRETE CAP
EPOXY RESIN
GASKET
COPPER CONDUCTOR
CLAY POT
COTTON BAG
Cu/CuSO₄ CRYSTALS
(98% MIN. PURITY)



NETT WEIGHT 9kg APPROX.
GROSS WEIGHT 25kg APPROX.

DIMENSIONS
Cu/CuSO₄ ELECTRODE Ø152 x 305mm
PACKAGED SIZE Ø230 x 410mm APPROX.



STAFFORD PARK 11
TELFORD
TF3 3AY
UNITED KINGDOM

PHONE : +44 (0) 1952 290321
FAX : +44 (0) 1952 290325
EMAIL : sales@bacgroup.com
ENGINEERING@bacgroup.com
WEBSITE : www.bacgroup.com

TITLE
CORROSION CONTROL
TYPICAL PERMANENT PREPACKED
Cu/CuSO₄ REFERENCE ELECTRODE

DRAWN	DGT	DATE	MATERIAL	SHEET	1	OF	1
CHECKED	DJ	DATE	THIS DRAWING IS THE PROPERTY OF BAC CORROSION CONTROL LTD. IT MUST NOT BE COPIED, USED FOR MANUFACTURE OR OTHERWISE DISCLOSED WITHOUT THE PRIOR ARRANGEMENT OF THE COMPANY.	SCALE	1	NTS	A3
REVIEWED	DM	DATE		STD DRAWING	S	021	REV
APPROVED	APG	DATE					0

FIRST ISSUE ON RELEASE NOTE

REVISION

