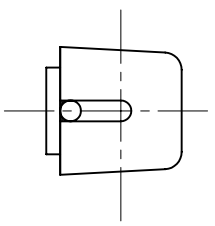
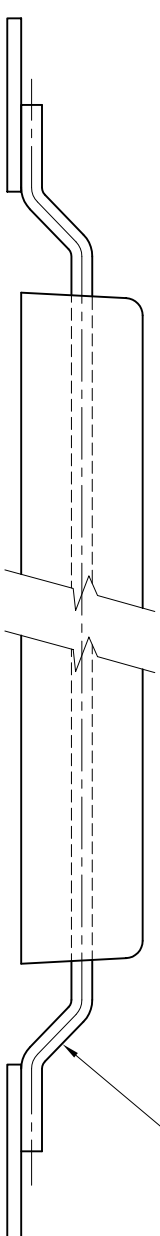
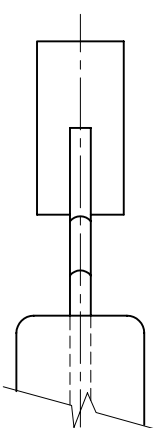


DO NOT SCALE

FIRST ISSUE ON RELEASE NOTE

REVISION



STEEL BAR

ALUMINIUM ANODE

ZINC ANODE

PERFORMANCE DATA - SEAWATER

PERFORMANCE DATA - SEAWATER

CAPACITY AMP HOURS :- 2680 A.hrs/per kg min.
 EFFICIENCY :- 90%
 CLOSED CIRCUIT POTENTIAL :- -1100 mV (wt Ag/AgCl)

CAPACITY AMP HOURS :- 780 A.hrs/per kg min.
 EFFICIENCY :- 95%
 OPEN CIRCUIT POTENTIAL :- 1.05 + 0.05 V (wt Ag/AgCl)

BAC
CORROSION CONTROL

STAFFORD PARK 11
 TELFORD
 TF3 3AY
 UNITED KINGDOM

PHONE : +44 (0) 1952 290321
 FAX : +44 (0) 1952 290325
 EMAIL : sales@bacgroup.com
 EMAIL : engineering@bacgroup.com
 WEBSITE : www.bacgroup.com

TITLE
 TYPICAL ZINC/ALUMINIUM SACRIFICIAL ANODE

DRAWN	DGT	DATE	MATERIAL	SHEET	1	OF	1
CHECKED	DJ	DATE	THIS DRAWING IS THE PROPERTY OF BAC CORROSION CONTROL LTD. IT MUST NOT BE COPIED, USED FOR MANUFACTURE OR OTHERWISE DISCLOSED WITHOUT THE PRIOR ARRANGEMENT OF THE COMPANY.	SCALE	NTS		A3
REVIEWED	DM	DATE		STD DRAWING	S 016		REV
APPROVED	APG	DATE					0

F

F

E

E

D

D

C

C

B

B

A

A

1 2 3 4 5 6 7 8